

VERSATILE SYSTEM EXPANSIONS ARE POSSIBLE

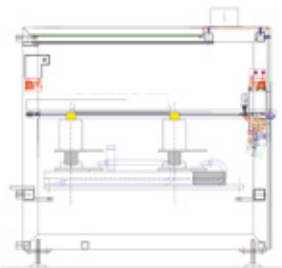
Whether the CUBE Inline* is used as a base system or with one of the many options, with the CUBE Inline* you are prepared for all challenges.

BASIC	
	Fluxer + Preheat + MiniWave
	Fluxer + Fluxer + Preheat + MiniWave
	Fluxer + Preheat + Preheat + MiniWave
	Fluxer + Preheat + Preheat + MiniWave + MiniWave
	Fluxer + Preheat + ActiveFlow
	Fluxer + Preheat + ActiveFlow + MiniWave
	Fluxer + Preheat + Preheat + Preheat + ActiveFlow
	Fluxer + Preheat + Preheat + Preheat + ActiveFlow + MiniWave

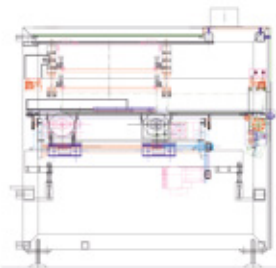
The configurations shown above, represent the flexible construction of the soldering system.

The modules AOI, brush or cooling module can be combined with any of these versions.

AOI module



Brush module



Cooling module



FROM THE BASIC VERSION TO THE PRODUCTION LINE

Thanks to the clever design of the modules, they are able to be retrofit at a later date in addition to the start. This allows for increased production capability of the line.

The results in the optimal production line according to the customer needs and requirements.



THE MODULAR
SOLDERING SYSTEM
FOR HIGHEST
EFFICIENCY



The AOI directly connected to the solder system offers the customer 100% control over the PCB. With the downstream verifications station, the product can be inspected and verified by the operator.

INERTEC is also happy to offer a complete line with integrated workstations for the customer.



Inertec Löttechnik GmbH
Kreuzstraße 17
97892 Kreuzwertheim

Phone: +49 9342 9219-0
Fax: +49 9342 9219-40

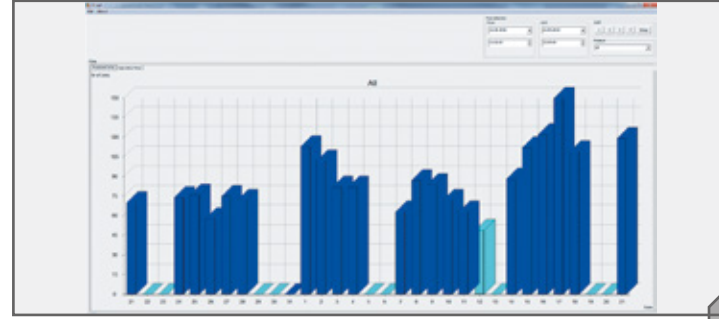
www.inertec.de

CUBE Inline⁺

FOR HIGHEST EFFICIENCY
AND PRODUCTIVITY

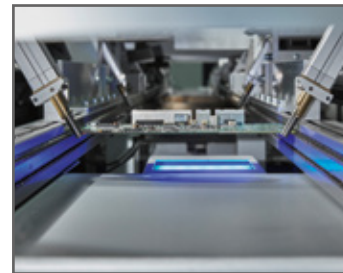
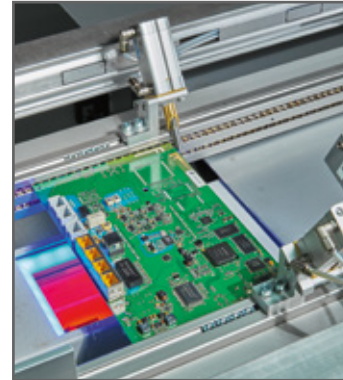
EASY PROGRAMMING

- Easy, graphical programming
- With a modular structure, retrofitting is possible and easy to implement on site
- Professional functions
- Process monitoring
- Bus compatible DC servo motors
- Connection to MES as well as the logging of all process data



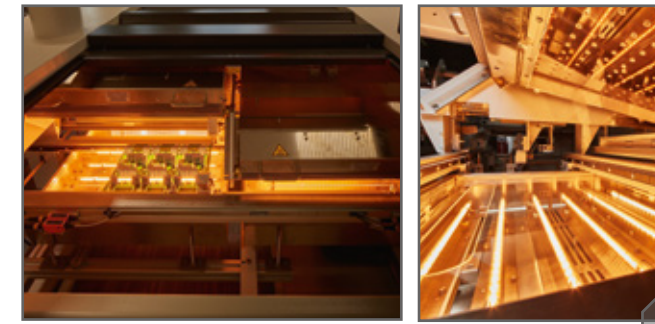
AOI

- Automatic solder joint inspection for SMT and THT components
- Automatic control of component insertion and solder fill control
- Inspection from below and above in a cell
- Angled camera
- Error display in the analysis and repair station software



PRECISE FLUX CONTROL

- Drop Jet Fluxer as the perfect solution for applying flux
- Several spray heads, depending on the cycle time requirement
- Optical monitoring via laser (optional: measurement / monitoring of the application quantity)
- Program-controlled cleaning of the Drop Jet Fluxer, this avoids the maintenance and cleaning by the operator



HIGH EFFICIENCY PREHEATING

- The number of preheating modules as well as the preheating type can be selected as desired
- Efficient quartz preheater as well as convection heater is applicable
- Low energy consumption
- Control of the PCB temperature and transfer of the values in BDE datas



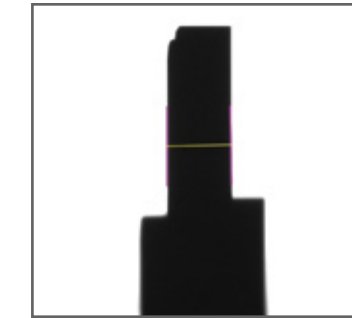
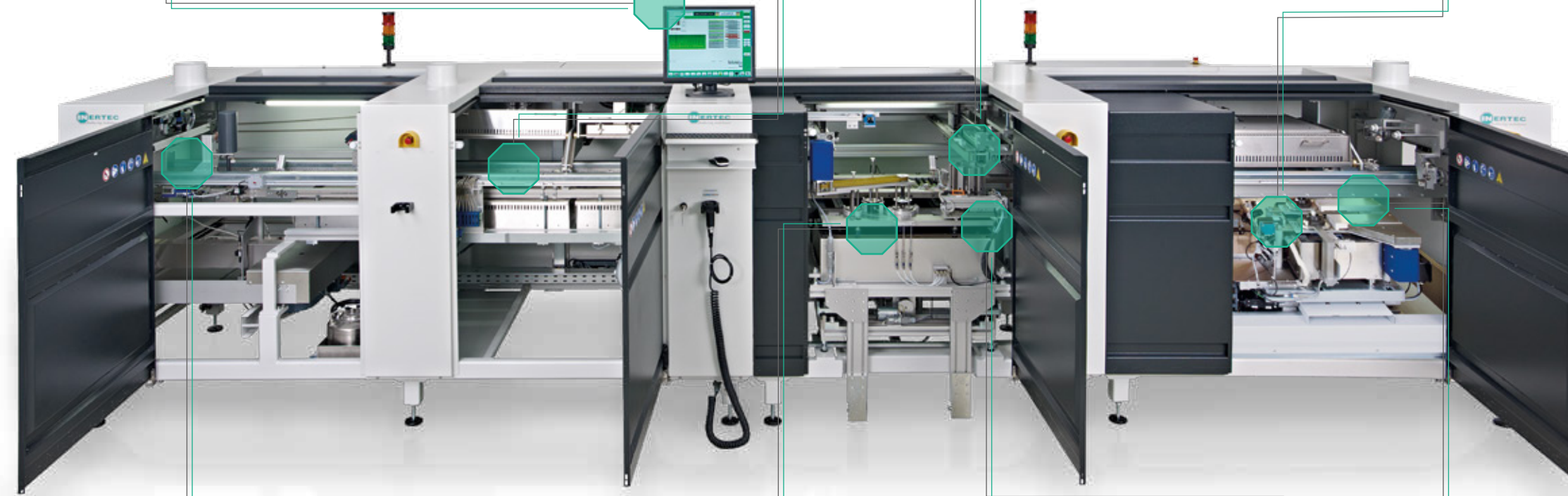
ROBUST CONVEYOR

- Segmented conveyor provided with a pin chain
- Precise placement of the workpiece carrier / PCB through a stopper system
- Optionally: automatic conveyor width adjustment



PROCESS CONTROL

- An optional process camera allows for constant monitoring of the nozzles
- The wave height is measured and adjusted via a titanium needle
- Position correction with Fiducial
- Deflection measurement of the PCB with a warpage control sensor



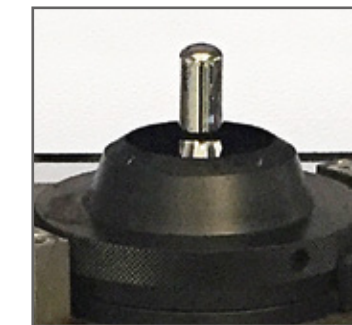
AUTOMATIC SOLDERING NOZZLE DETECTION

One of the many technical features is the automatic nozzle recognition via a camera in the soldering area. This supports the operator and avoids an incorrect nozzle tip insertion.



ELECTRODYNAMIC SOLDERING PUMP

In addition to the standard soldering pump, an electromagnetic version is available



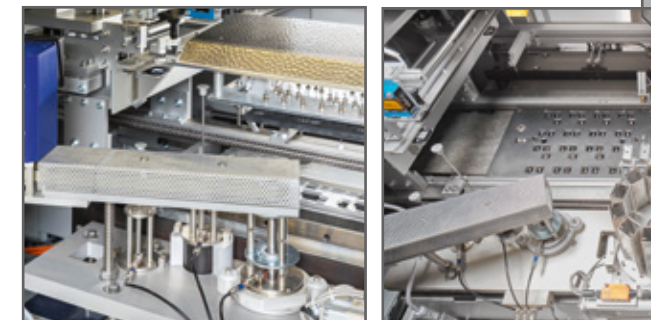
SOLDERING MODULE ACTIVEFLOW

- High energy transfer between the smallest component clearances
- PCB's up to dimensions of 400 x 400 mm
- Short cycle times



SIMPLE TOOL CHANGE

- Maintenance friendly
- Quick and accurate tool exchange
- Soldering height is actively controlled
- Coated components/ stamps are made of titanium
- High energy transfer during soldering due to the circulation of the solder in the stamp



SOLDERING MODULE MINI WAVE

- Consistent heating of the soldering area
- Two soldering aggregates (different nozzle sizes are possible)
- Quick and easy exchange of soldering nozzles
- The use of the automatic soldering nozzle cleaning avoids any maintenance / cleaning for the operator during the production

